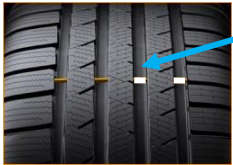


## CHECK ON THE VEHICLE Class B

### WHEELS (155/70 R 19 84 Q)

**TIRE DESCRIPTION:** 155 tire width in mm (eg), 70 height to width ratio in %, R radial tire, 19 rim diameter in inches, 84 load capacity index, Q design speed

**PROFILE DEPTH:** Summer tires 1.6 mm, winter tires radial 4 mm/diagonal 5 mm  
Winter tires required from November 1st to April 15th in winter driving conditions



Checking the tread depth with a tread depth gauge or indicators (TWI or arrow), Pay attention to even tire wear, otherwise incorrect tire pressure

Visual inspections for possible tire damage (cuts, cracks, dents)

Check the rims for damage

**BALANCING WEIGHTS:** mounted on the rim, equalize the center of gravity, missing from the front wheel vibration of the steering is noticeable

**AIR PRESSURE:** can be found in the owner's manual or on a sticker on the driver's door  
Check when the tires are cold with a pressure gauge; tire pressure depends on the load and possibly the tire size (approx. 2.4 to 2.9 bar)

**EXPLAIN WHEEL CHANGE:** Show the spare wheel (no longer required), the tools and the jack

Process: Secure the vehicle, loosen the wheel nuts, lift the car, wheel change, tighten the wheel nuts diagonally by hand, lower the car, Tighten the wheel nuts with a tool, showing the breakdown triangle and the . Bandage cassette

### BRAKE SYSTEM

**STORAGE TANK:** see fluid levels

**PARKING BRAKE TEST:** Check the free travel (approx. 1 third of the lever travel on the pedal if the free travel is significantly larger, a brake circuit has failed = specialist workshop)



Check for leaks (press the pedal fully for 20-30 seconds, the pedal may be under). Do not give in to pressure, otherwise the brake system would leak = specialist

Checking the function of the brake booster (pressing the brake booster several times brake pedal, then start the engine, pedal gives way)

Check the function of the brake lights (if necessary with a second person)

**Electronic parking brake - PARKING BRAKE:** check according to operating instructions

Brake indicator light

### LIGHTING

**TURNING ON THE LIGHT LEVELS:** Sidelight, Low Beam, High Beam, Fog Light, Rear fog light, daytime running light

Checking the lighting with the tour inspection (condition, Dirt, defective lamps)

Headlight range adjustment (setting according to the operating instructions)

## SIGNALING AND WARNING DEVICES

**ACTUATING THE HEADLIGHTS:** Pull the turn signal lever towards the steering wheel (high beam lights up)  
Used to warn of danger

**ACTUATING THE HORN:** usually directly on the steering wheel, function check if this is permitted locally  
Use if flashing headlights is not enough

**ACTUATING THE HAZARD LIGHTING SYSTEM:** Show the switch, carry out a functional check (all indicators must work)

Use in case of (breakdown, traffic jam, securing the scene of an accident,  
student transport)

## STEERING

**STEERING AID:** maintenance-free power steering with electrical support, no free travel should be noticeable (check with the engine started)  
Checking the hydraulic oil level in the reservoir only in older vehicles

**WEAR OF THE FRONT TIRES:** If the tread wears on one side, the track is adjusted

## SUFFICIENT VISION

**WINDSHIELD WIPER:** Functions



1x downwards = 1 wipe forward

2x up = fast

Turn button = interval how fast

Pull the lever 1x = WASH the front

1x turn lever = wipe at the back & wash



**WINDOW FAN:** Show actuating device (defrosting position), possibly fan higher level

**REAR WINDOW HEATING:**  
Rear windows get warm



Show operating device (indicator lamp), heating wires in

## FLUID LEVELS

**COOLANT:** Check the amount in the expansion tank (between Min and Max) before the start of winter  
Have antifreeze content checked (minus 25 degrees ), temperature on remote thermometer read off

**BRAKE FLUID:** Check the amount in the reservoir (between Min and Max), if too low  
Fluid level (leakage or brake pads worn) must be vehicle  
in the workshop

Special feature of the brake fluid: very high boiling point (300 degrees)  
absorbs water and therefore needs to be changed approximately every 2 years



If the brake fluid level is at Min then the brake control light lights up

**WINDOW CLEANER:** Reservoir and filler neck show, lights up when the fluid level is low  
orange indicator light comes on

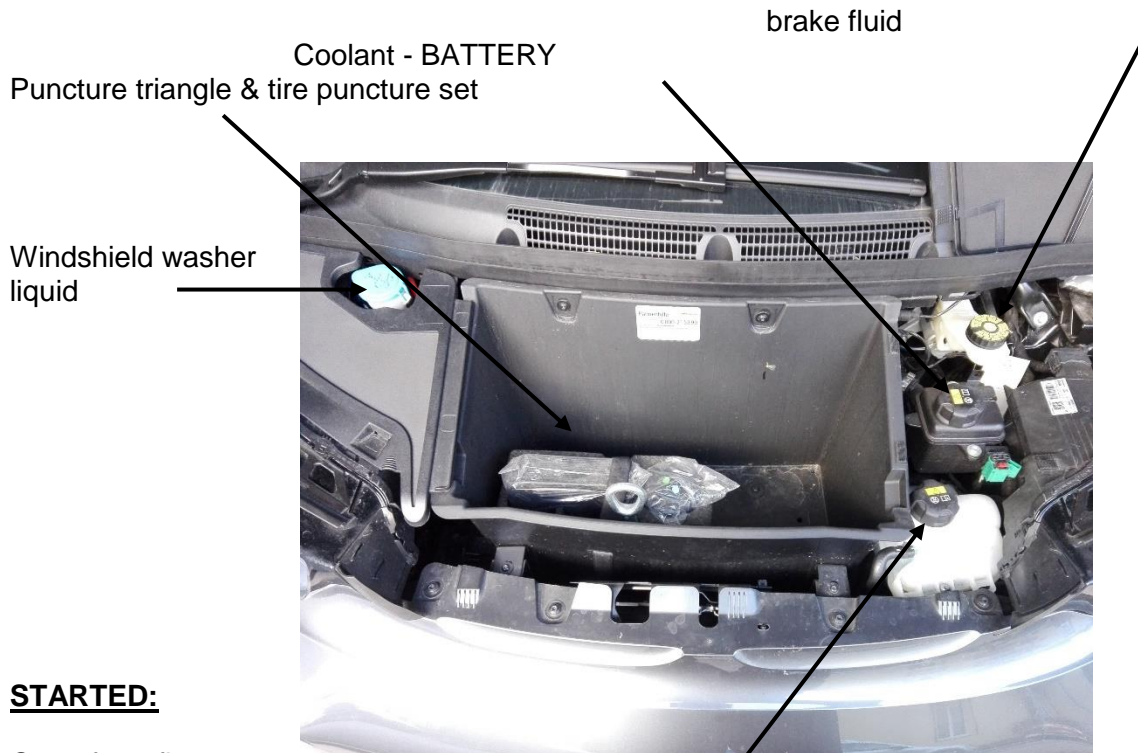
Add antifreeze in winter (-25 °), in summer only use window cleaner

## Load vehicle



Open the charging port flap in the interior, plug the vehicle plug of the charging cable into the charging port on the vehicle. Make sure the charging status indicator on the instrument panel lights up.

## Engine compartment



### STARTED:

Open front flap



Kühlfüssigkeit für Antrieb

Öffnen Heckklappe

## INTERNAL CHECKS

**SEATING POSITION:** Knees still slightly bent with the clutch pressed, backrest slightly backwards inclined, use steering wheel adjustment

**MIRROR:** The rear window is completely visible in the interior mirror, only a little of the driving light is visible in the exterior mirrors.  
Stuff visible (reducing blind spot)

**HEADREST:** adjust to body size (eye level in the middle of the headrest)

**SEAT BELT:** must not be twisted, must be tight, use height adjustment

## § 57a assessment (Pickerl)



§57a assessment is a technical inspection of the vehicle.

The sticker states when the next inspection is due. (e.g.: July 2004 see picture)  
It is allowed to have the verification carried out one month before and up to 4 months after the specified date.

For new vehicles, the first inspection after 3 years, then after 2 years and then every year.

## ADDITIONAL INFO

### **PARKING ASSISTANT:**

The parking assistant, including longitudinal guidance, parks the vehicle fully automatically parallel or perpendicular to the road. To do this, the system measures parking spaces as you drive past at low speed. If you park manually without parking assistant, the Active Park Distance Control (PDC) with side parking aid offers additional protection against parking damage.

### **CRUISE CONTROL:**

The active cruise control with Stop & Go function keeps the distance to the vehicle in front constant at all times. In a traffic jam, the system brakes until the vehicle comes to a standstill and automatically starts moving again as soon as it is possible to continue driving.

### **TRAFFIC TRAFFIC ASSISTANT:**

The switchable steering and lane guidance assistant including traffic jam assistant relieves the driver in monotonous traffic situations. Up to a speed of 60 km/h, the motorway system conveniently supports steering and guides the vehicle in the middle of the lane.

### **SOS BUTTON:**

In the event of an airbag deployment or manual activation, the intelligent emergency call automatically sends an emergency call - in accordance with the locally possible mobile phone services - to the BMW call center via an accident-proof telephone unit permanently installed in the vehicle. Regardless of your mobile phone and both at home and abroad. A specially trained employee will contact you, assist you by telephone, if possible even in your native language, and inform the emergency services.

  
**EASY DRIVERS**  
FAHRSCHULE - MARTSCHITSCH

Ing Marcus Martschitsch  
Sackgasse 3, 8230 Hartberg  
Tel.: 03332 623 73  
Fax DW 22

**MIT DER EASY-APP  
ZUM ERFOLG**

